

The River South Greenway Master Plan



Draft For Review
09/09/09



The River South Greenway Master Plan



The Greenway Foundation



Colorado Water Conservation Board



Urban Drainage and Flood Control District



Denver Public Works



Denver Parks and Recreation



Denver Water Board

Prologue:

- Renewing Our Vision...

Letters of Support from the Funding Partners:

Table of Contents:

Chapter 1:

The River South Greenway Master Plan

- A. Purpose and Mission of the Plan
- B. Goals
- C. The South Platte River Greenway Vision
 - Vision Map
- D. The Plan
 - Southern Platte Valley Regional Park
 - Commercial Greenway Corridor
 - Urban Greenway Corridor
 - Central Platte Valley Entertainment District
- E. Recommendations
 - River Health
 - Transportation and Roadways
 - Public River Edge
 - Parks and Public Open Spaces
 - Multi-Use Trails and River Connections
 - Safety and Security
 - Regulatory Actions
- F. Recommendations Map & Typical Sections
 - Regulatory Actions

Chapter 2:

The Process

- A. Acknowledgements
- B. The Planning Process
- C. Objectives
- D. Planning Principles

Chapter 3:

Existing Conditions

- A. River South Greenway Identity
- B. Land Use and Ownership
- C. River Health
- D. Water Quality

- E. River Channel and Riverbank
- F. Parks and Public Open Spaces
- G. Natural Areas
- H. Multi-Use Trails and River Connections
 - Barriers to River Access
 - River Gateways and Entry
- I. In-River Recreation
 - Boating
 - Fishing
- J. Safety and Security

Chapter 4:

Detailed Recommendations

- A. Land Use and Ownership
- B. River Health
 - Water Quality
 - River Channel and Riverbank Stability
 - Emergent Benches
 - Riparian Buffer
 - Stormwater Detention
- C. Transportation and Roadways
- D. Public River Edge
- E. Parks and Public Spaces
 - Natural Areas
 - Existing Parks
 - Proposed Parks and Public Open Space
- F. Multi-Use Trails and River Connections
- G. In-River Recreation
 - Boating
 - Fishing
- H. Safety and Security
- I. Regulatory Recommendations
 - Create an Advisory Committee
 - Riparian Buffer
 - Conservation Easements
 - Zoning Setback Standards
 - Development Fee

Appendix:

The River South Greenway Goals

*1. Create a River-focused urban environment that is healthy, habitable and connected.

*2. Promote ecosystem restoration through sustainable natural systems design that allows goals for improved water quality, habitat creation, fishing and River stability to be achieved.

*3. Build on the current success and activity along the central South Platte River Valley by creating new diversified activity centers along the RISO Greenway Corridor.

*4. Create a parks/open space oriented model for urban living that reflects the history of Denver and the River South area in particular.

*5. Enhance the safety of the River corridor and the surrounding area.

*6. Utilize existing and proposed parks as the organizing elements that create a sense of place and a community focal point, which will in turn increase property values, economic vitality and development opportunities along adjacent transportation corridors.

*7. Create a regional gateway to downtown Denver along with a series of neighborhood gateways that reflect the unique character of each.

*8. Establish the RISO Greenway Corridor as a destination point for entertainment, recreation, commercial and residential amenities.

*9. Connect neighborhoods and public facilities by providing access to local businesses and entertainment venues and creating links to adjacent communities and regional trail corridors.

10. Encourage multiple alternative transportation opportunities including rail, bicycle, pedestrian, and boating.

11. Make the river edge more accessible through additional ADA access points.

12. Provide a local, nationally recognized destination for boaters and anglers with varying degrees of skill levels and abilities.

13. Improve native fish passage throughout the South Platte River corridor.

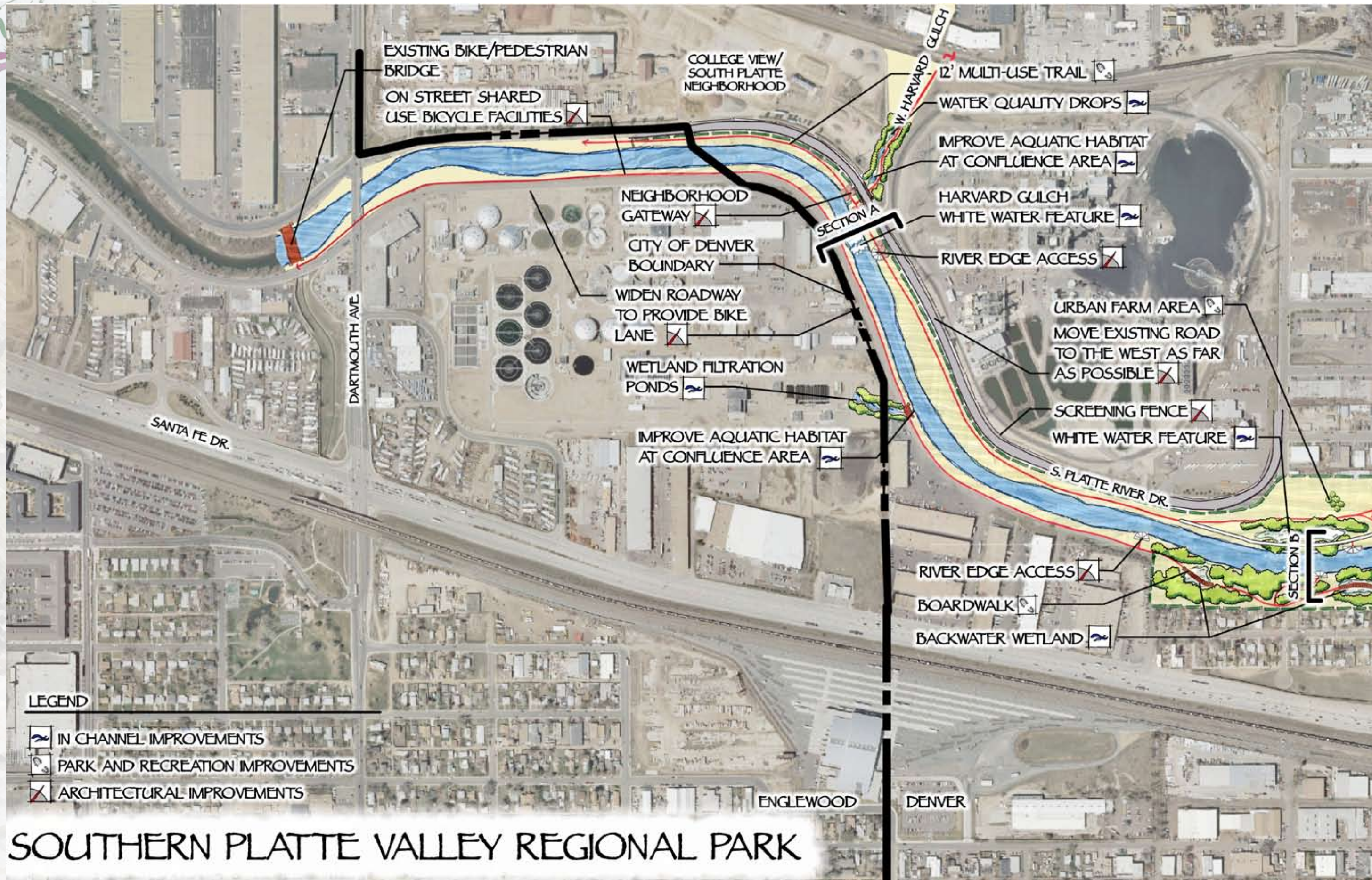
14. Improve aquatic and terrestrial habitat to sustain wildlife movement, food and shelter throughout the South Platte River corridor.

15. Implement the South Platte River Vision through the identification and fostering of project partners.

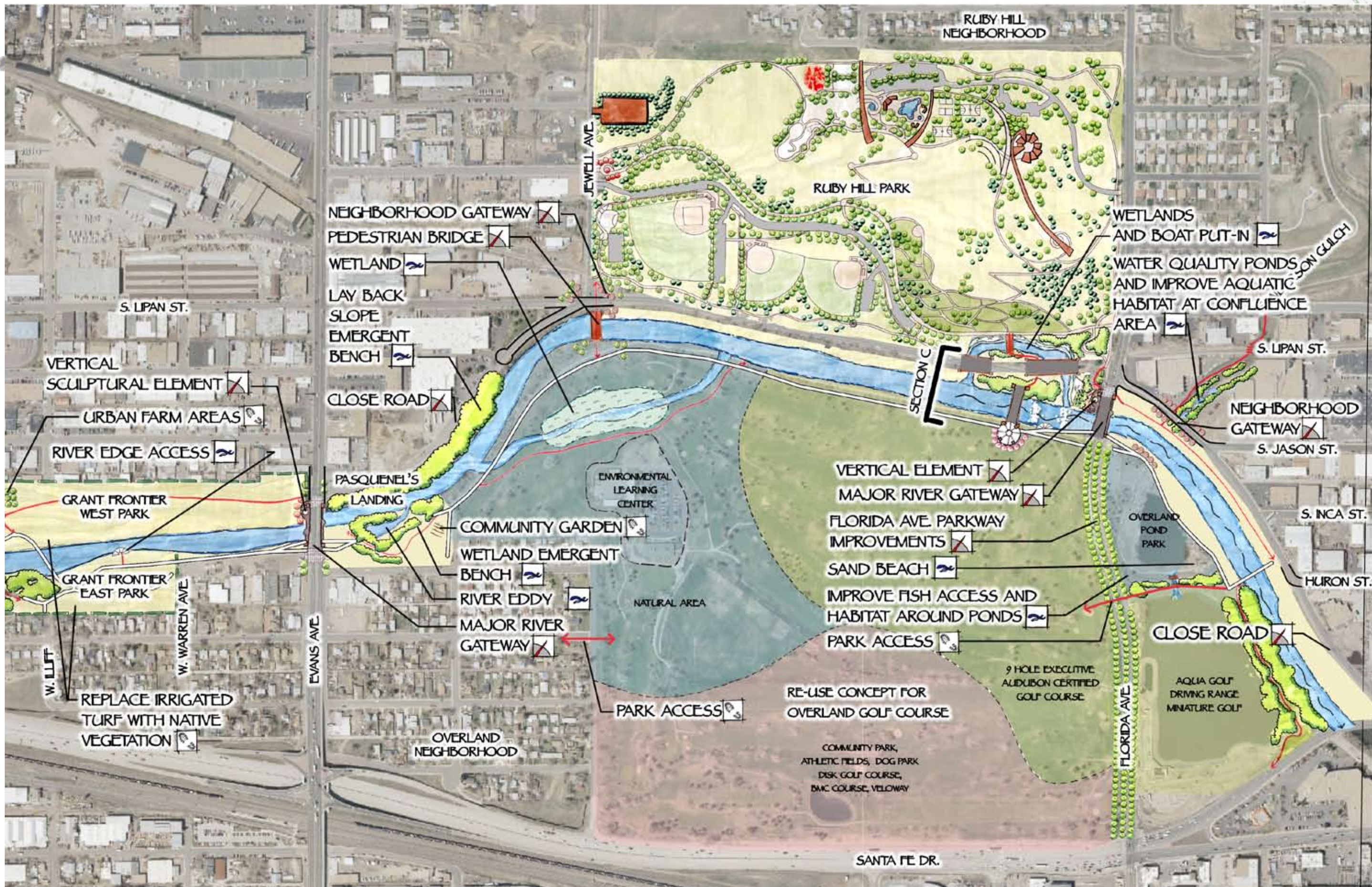
16. Identify development, financial and regulatory guidelines for parks, recreation, environmental enhancements, expanded public open space, and improved water quality within the South Platte River Greenway.

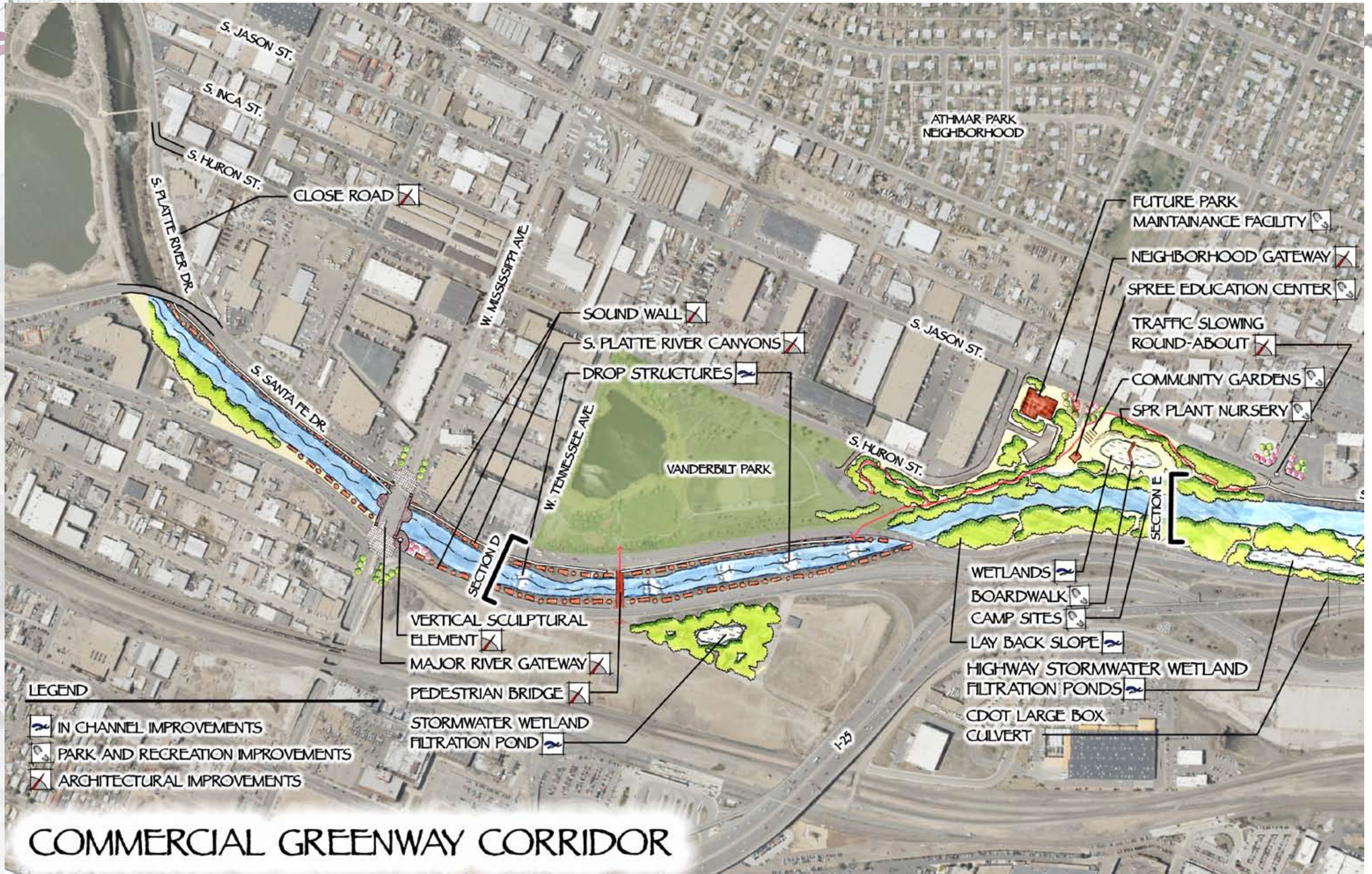
17. Assure that all recreational, habitat, access, etc. improvements maintain or improve the flood control capacity and projected bankside stability on the South Platte River.

* Denotes Goals that were included in the RINO Greenway Master Plan and are being recommended for carry-over into the RISO Greenway Master Plan.

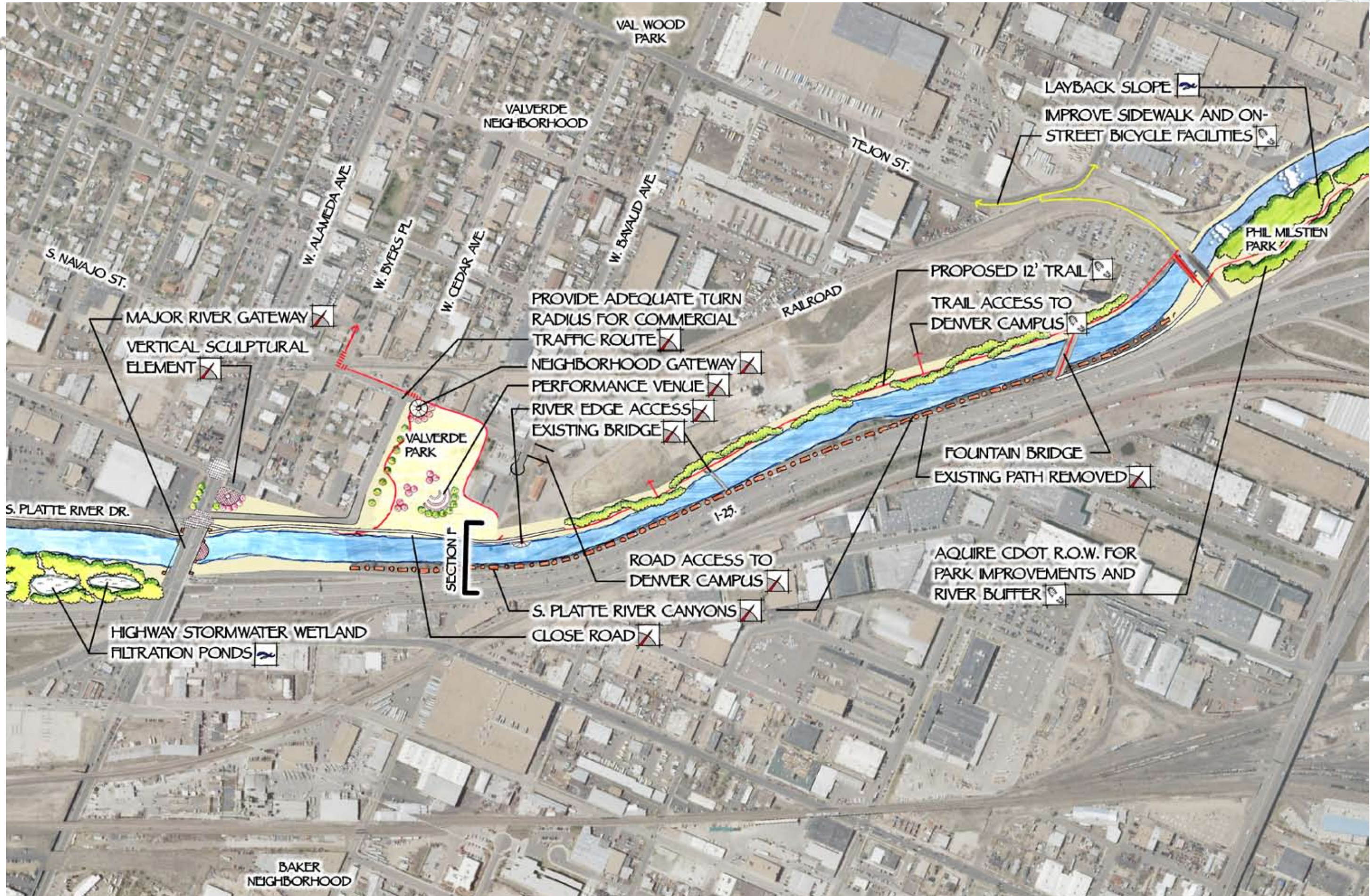


SOUTHERN PLATTE VALLEY REGIONAL PARK





COMMERCIAL GREENWAY CORRIDOR



VAL WOOD PARK

VALVERDE NEIGHBORHOOD

LAYBACK SLOPE
IMPROVE SIDEWALK AND ON-STREET BICYCLE FACILITIES

PHIL MILSTEN PARK

TEJON ST.

W. BAYAUD AVE

W. CEDAR AVE

W. BYERS PL

W. ALAMEDA AVE

RAILROAD

PROPOSED 12' TRAIL
TRAIL ACCESS TO DENVER CAMPUS

PROVIDE ADEQUATE TURN RADIUS FOR COMMERCIAL TRAFFIC ROUTE

NEIGHBORHOOD GATEWAY

PERFORMANCE VENUE

RIVER EDGE ACCESS

EXISTING BRIDGE

FOUNTAIN BRIDGE
EXISTING PATH REMOVED

MAJOR RIVER GATEWAY
VERTICAL SCULPTURAL ELEMENT

SECTION F

VALVERDE PARK

ROAD ACCESS TO DENVER CAMPUS

AQUIRE CDOT R.O.W. FOR PARK IMPROVEMENTS AND RIVER BUFFER

S. PLATTE RIVER CANYONS

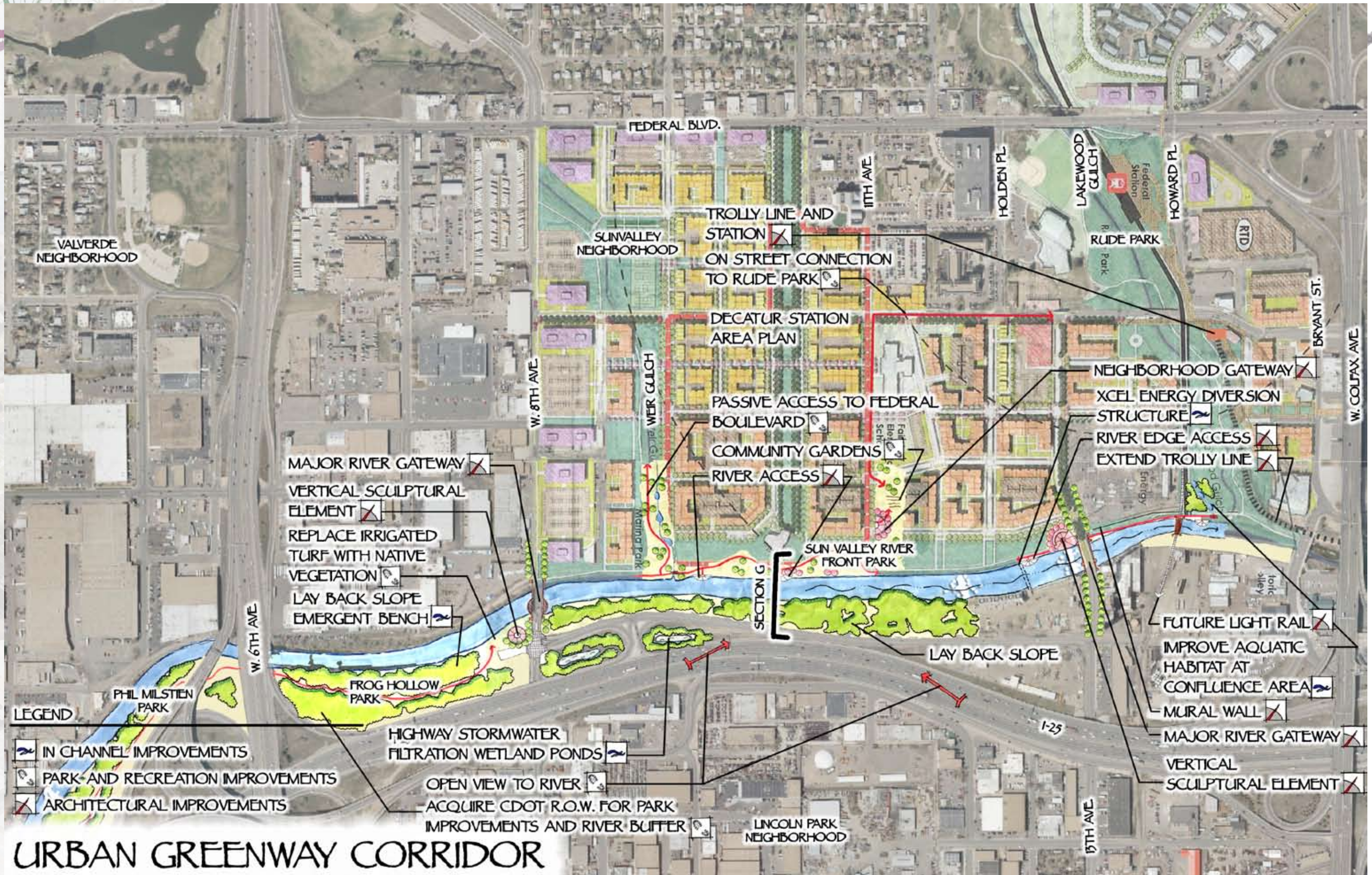
CLOSE ROAD

HIGHWAY STORMWATER WETLAND FILTRATION PONDS

S. PLATTE RIVER DR.

S. NAVAJO ST.

BAKER NEIGHBORHOOD



VALVERDE NEIGHBORHOOD

FEDERAL BLVD.

SUNVALLEY NEIGHBORHOOD

TROLLEY LINE AND STATION
ON STREET CONNECTION TO RUDE PARK

LAKELWOOD GULCH

RUDE PARK

HOWARD PL

RTD

BRYANT ST.

W. COLFAX AVE

DECATUR STATION AREA PLAN

PASSIVE ACCESS TO FEDERAL BOULEVARD

COMMUNITY GARDENS

RIVER ACCESS

NEIGHBORHOOD GATEWAY

XCEL ENERGY DIVERSION STRUCTURE

RIVER EDGE ACCESS

EXTEND TROLLEY LINE

MAJOR RIVER GATEWAY

VERTICAL SCULPTURAL ELEMENT

REPLACE IRRIGATED TURF WITH NATIVE VEGETATION

LAY BACK SLOPE EMERGENT BENCH

SUN VALLEY RIVER FRONT PARK

SECTION G

LAY BACK SLOPE

FUTURE LIGHT RAIL

IMPROVE AQUATIC HABITAT AT CONFLUENCE AREA

MURAL WALL

MAJOR RIVER GATEWAY

VERTICAL SCULPTURAL ELEMENT

LEGEND

- IN CHANNEL IMPROVEMENTS
- PARK AND RECREATION IMPROVEMENTS
- ARCHITECTURAL IMPROVEMENTS

HIGHWAY STORMWATER FILTRATION WETLAND PONDS

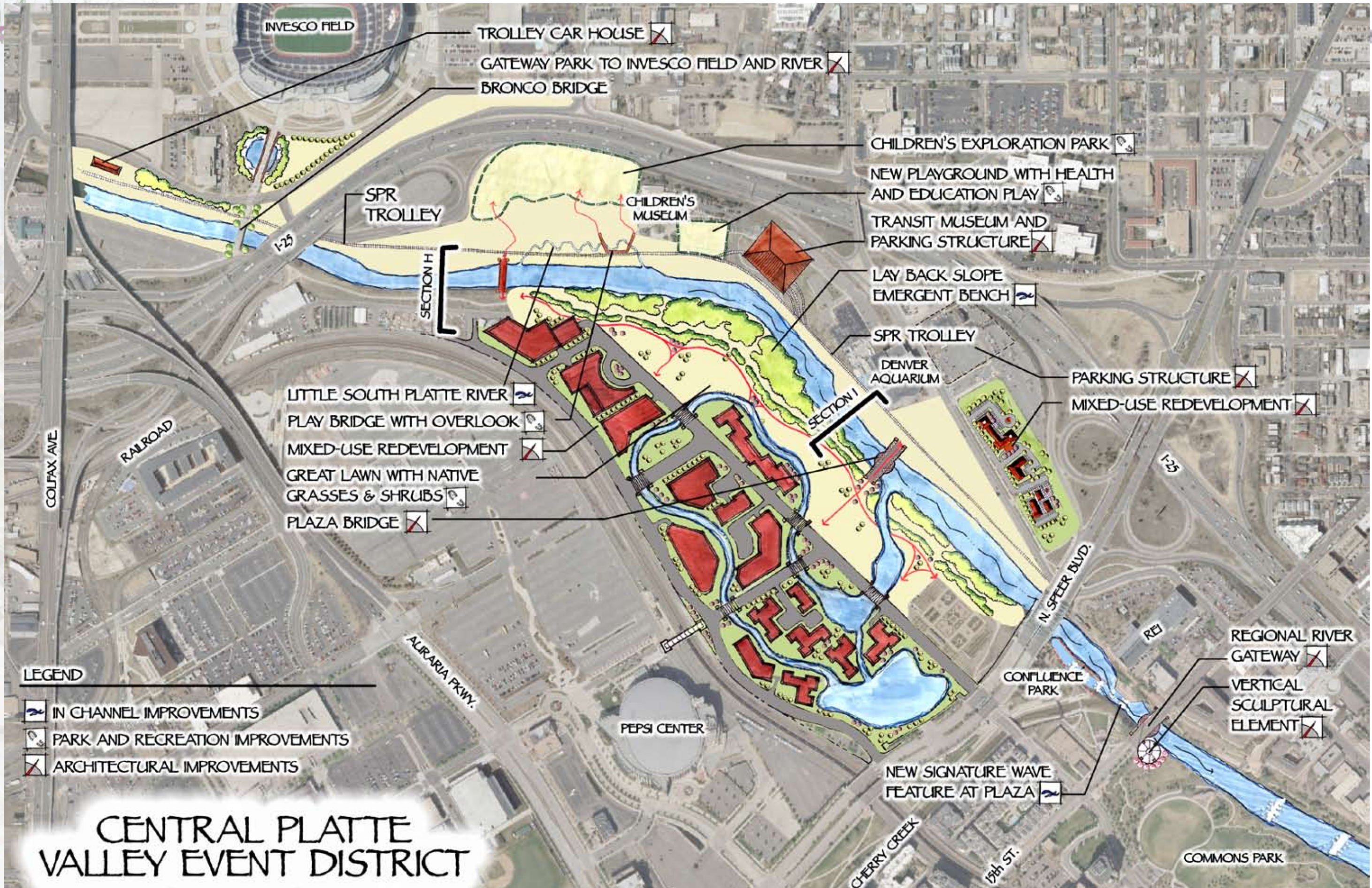
OPEN VIEW TO RIVER

ACQUIRE CDOT R.O.W. FOR PARK IMPROVEMENTS AND RIVER BUFFER

LINCOLN PARK NEIGHBORHOOD

URBAN GREENWAY CORRIDOR

THIS PAGE INTENTIONALLY LEFT BLANK



INVESCO FIELD

TROLLEY CAR HOUSE

GATEWAY PARK TO INVESCO FIELD AND RIVER

BRONCO BRIDGE

CHILDREN'S EXPLORATION PARK

NEW PLAYGROUND WITH HEALTH AND EDUCATION PLAY

TRANSIT MUSEUM AND PARKING STRUCTURE

SPR TROLLEY

CHILDREN'S MUSEUM

LAY BACK SLOPE EMERGENT BENCH

SPR TROLLEY

DENVER AQUARIUM

PARKING STRUCTURE

MIXED-USE REDEVELOPMENT

LITTLE SOUTH PLATTE RIVER

PLAY BRIDGE WITH OVERLOOK

MIXED-USE REDEVELOPMENT

GREAT LAWN WITH NATIVE GRASSES & SHRUBS

PLAZA BRIDGE

CONFLUENCE PARK

REGIONAL RIVER GATEWAY

VERTICAL SCULPTURAL ELEMENT

LEGEND

- IN CHANNEL IMPROVEMENTS
- PARK AND RECREATION IMPROVEMENTS
- ARCHITECTURAL IMPROVEMENTS

CENTRAL PLATTE VALLEY EVENT DISTRICT

PEPSI CENTER

NEW SIGNATURE WAVE FEATURE AT PLAZA

COMMONS PARK

COLFAX AVE

RAILROAD

ALURARIA PKWY.

CHERRY CREEK

19th ST.

N SPEER BLVD.

I-25

I-25

SECTION H

SECTION I

REI



NEW SIGNATURE WAVE
FEATURE AT PLAZA

CONFLUENCE
PARK

REGIONAL RIVER
GATEWAY
VERTICAL
SCULPTURAL
ELEMENT

EXPANDED CONFLUENCE RIVER PARK

DROP STRUCTURES (TYP.)

COMMONS PARK

SECTION J

RECONFIGURE EXISTING DROP STRUCTURES
TO FORM CONSTRICTIONS

RECONFIGURE FARMERS AND GARDENERS
DITCH TO RECIRCULATE RIVER FLOW

N SPEED BLVD.

CHERRY CREEK

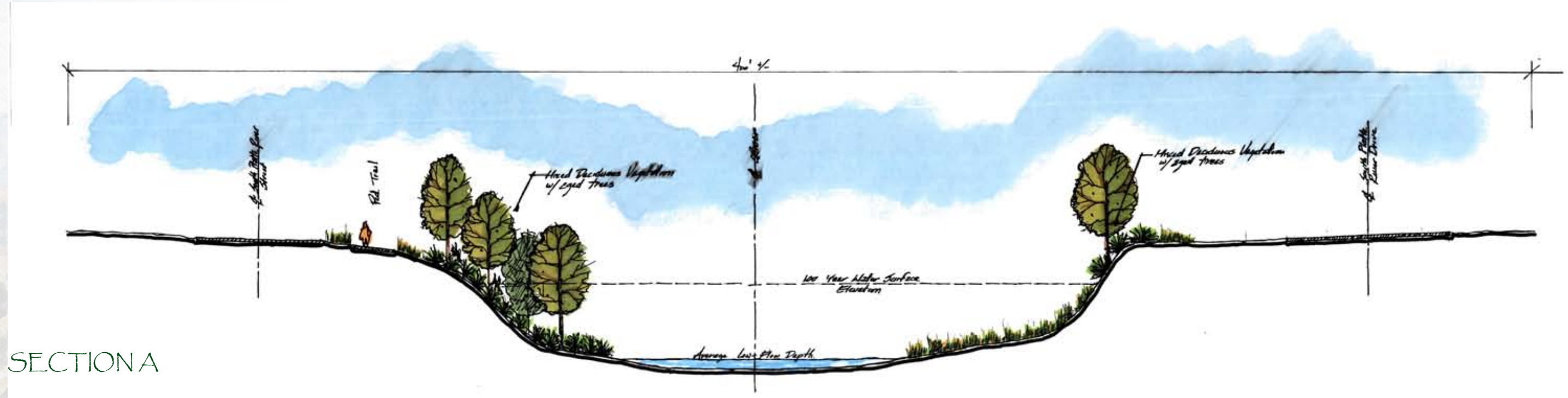
15th ST.

RAILROAD

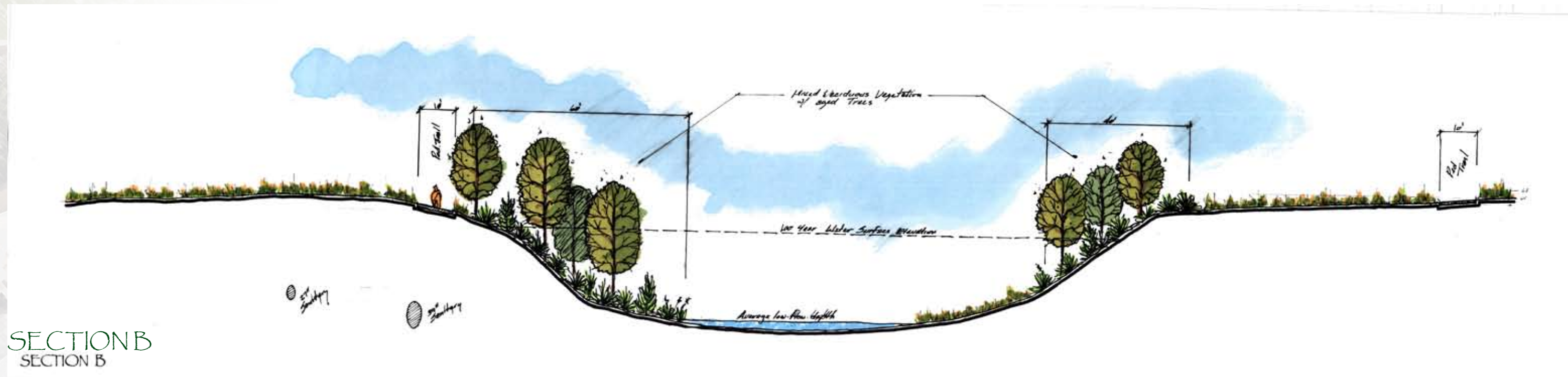
20TH ST.

CITY OF CLIEVERAVACA
PARK

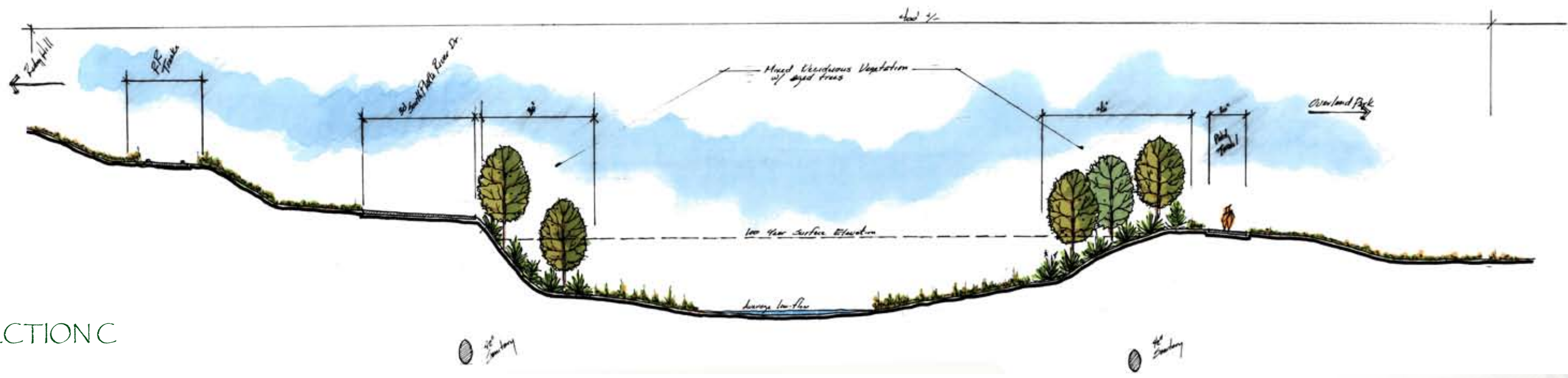
UNION STATION
NEIGHBORHOOD



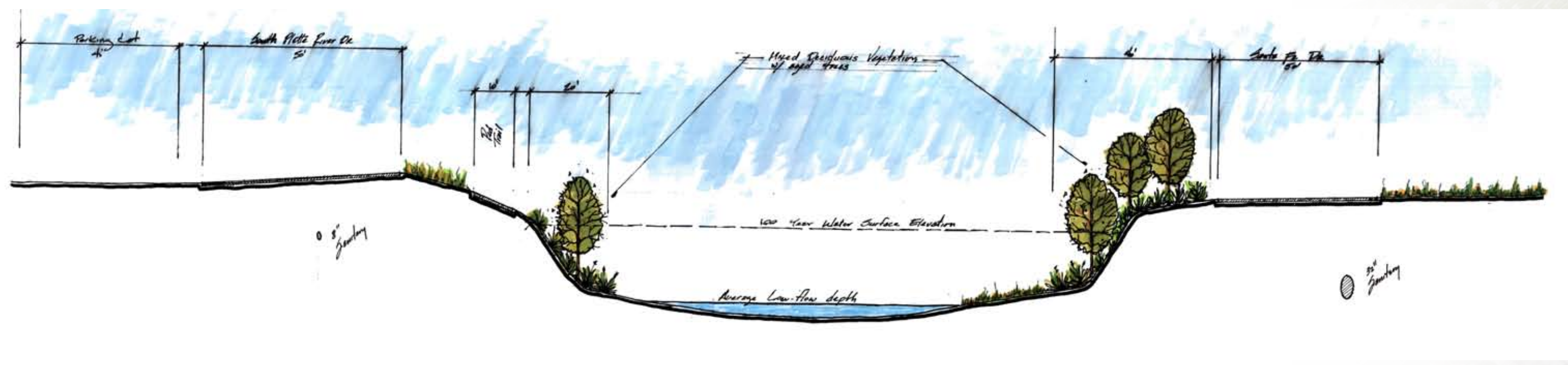
SECTION A



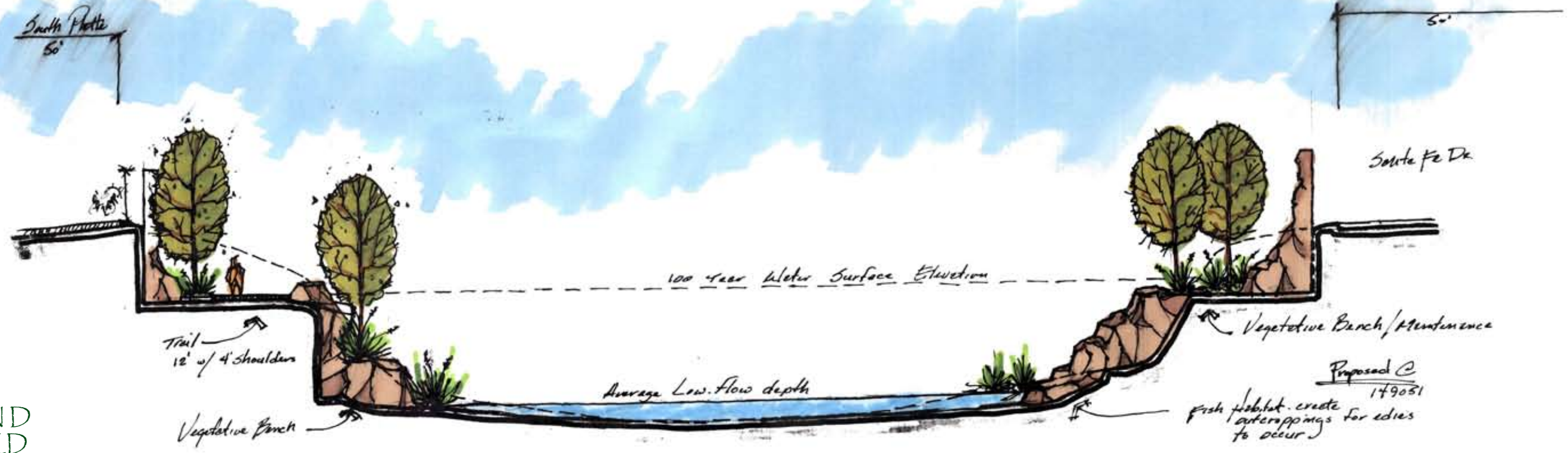
SECTION B
SECTION B



SECTION C



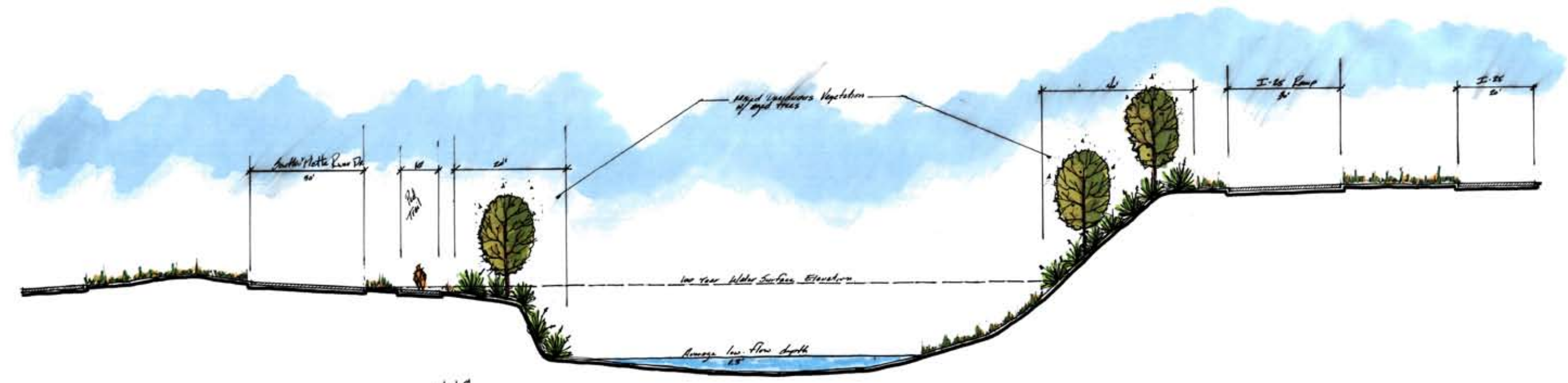
SECTION D
EXISTING



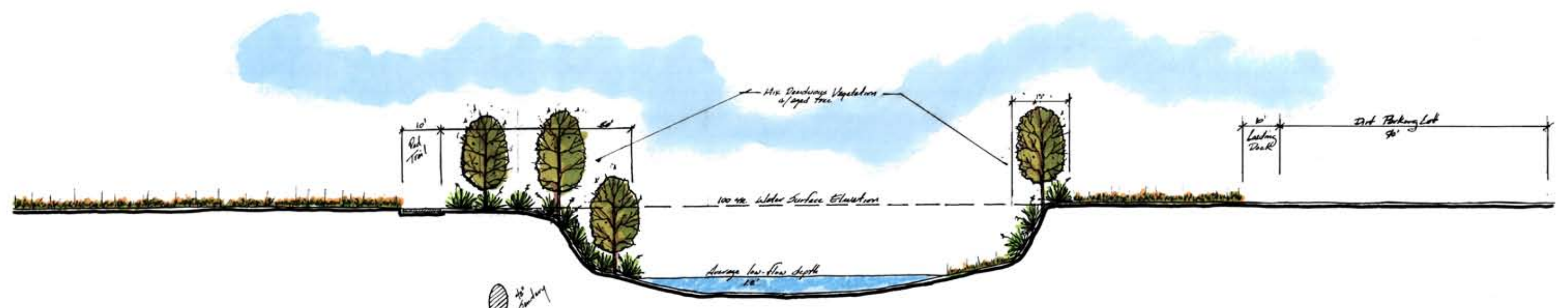
SECTION D
PROPOSED

SECTION GRAPHIC PENDING

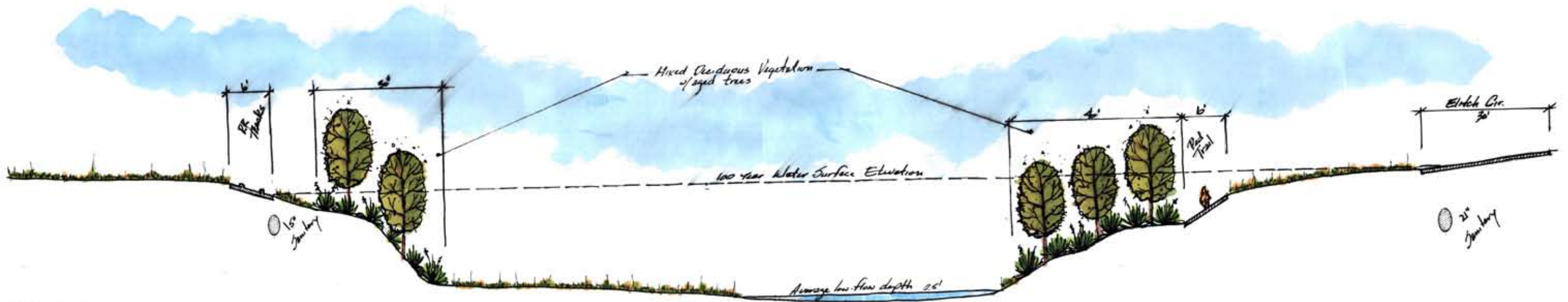
SECTION E



SECTION F
SECTION F



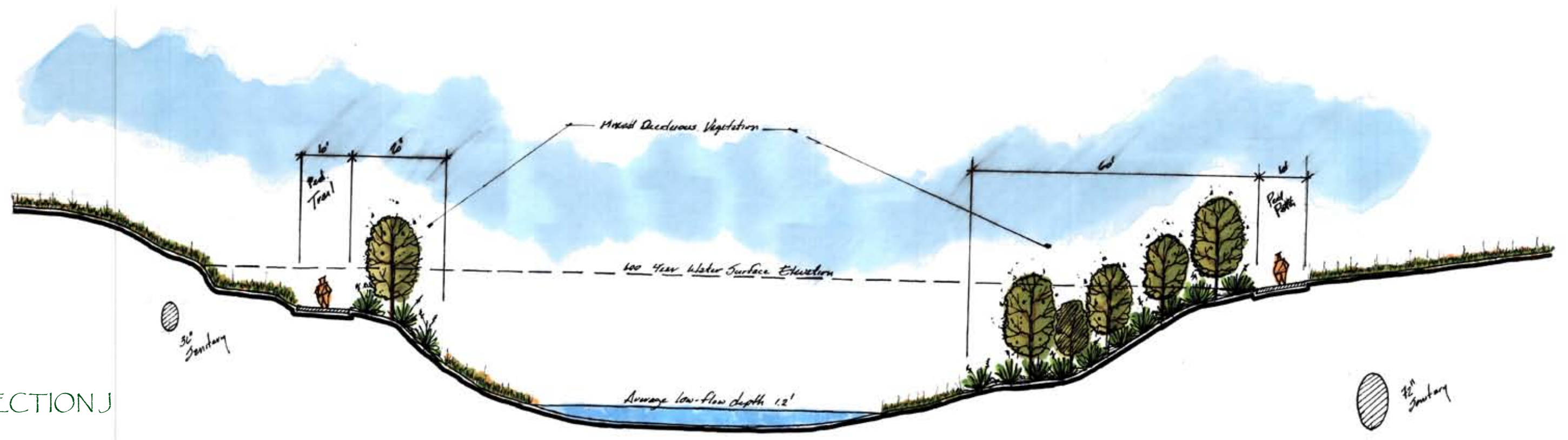
SECTION G



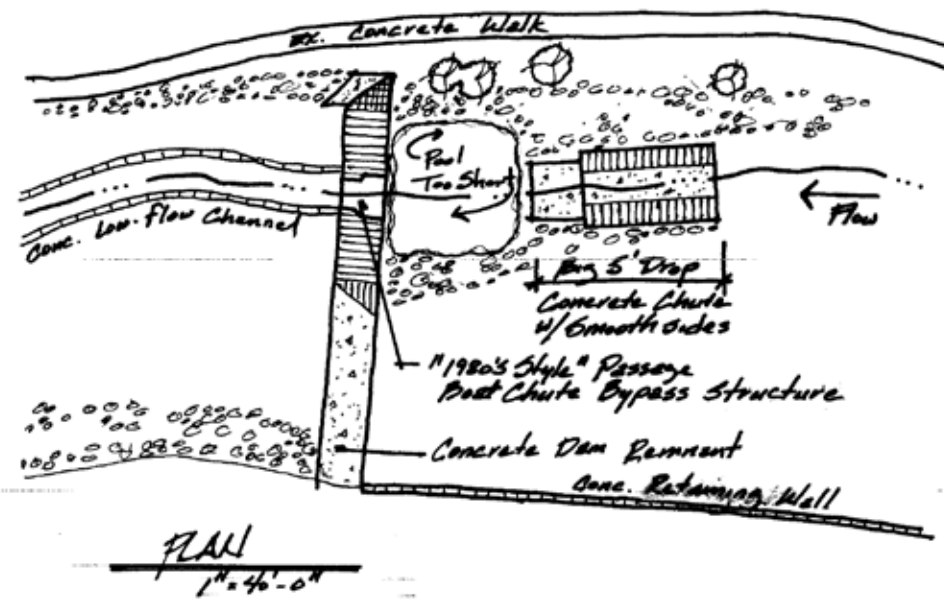
SECTION H
SECTION H

SECTION GRAPHIC PENDING

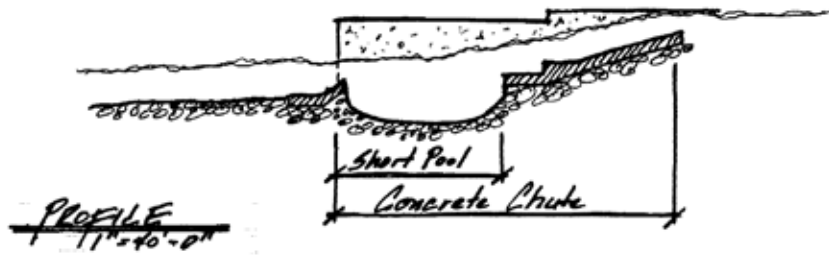
SECTION I



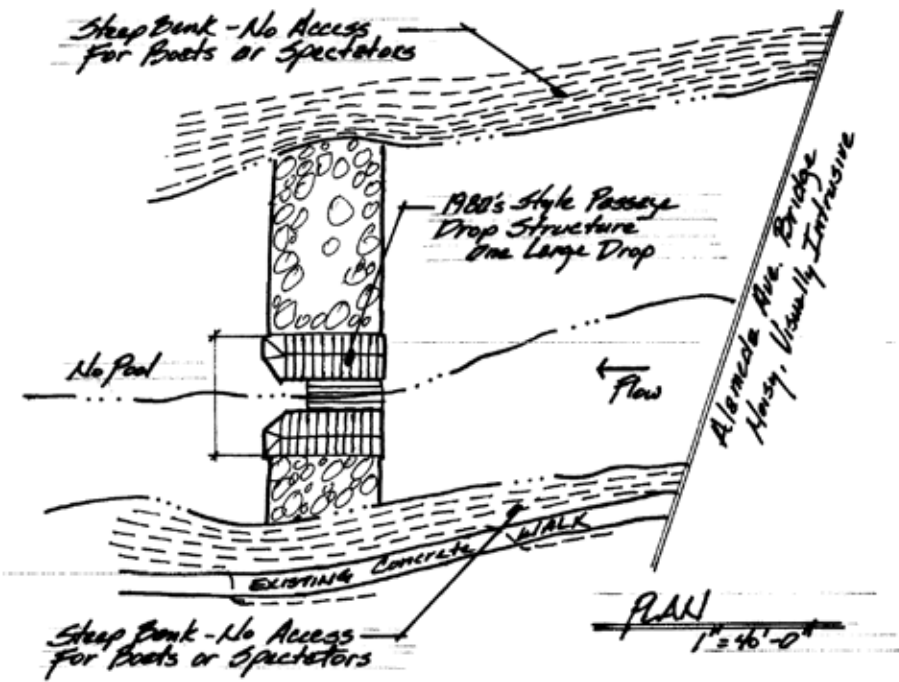
SECTION J



No Waves to Attract Boaters or Spectators - Too Difficult



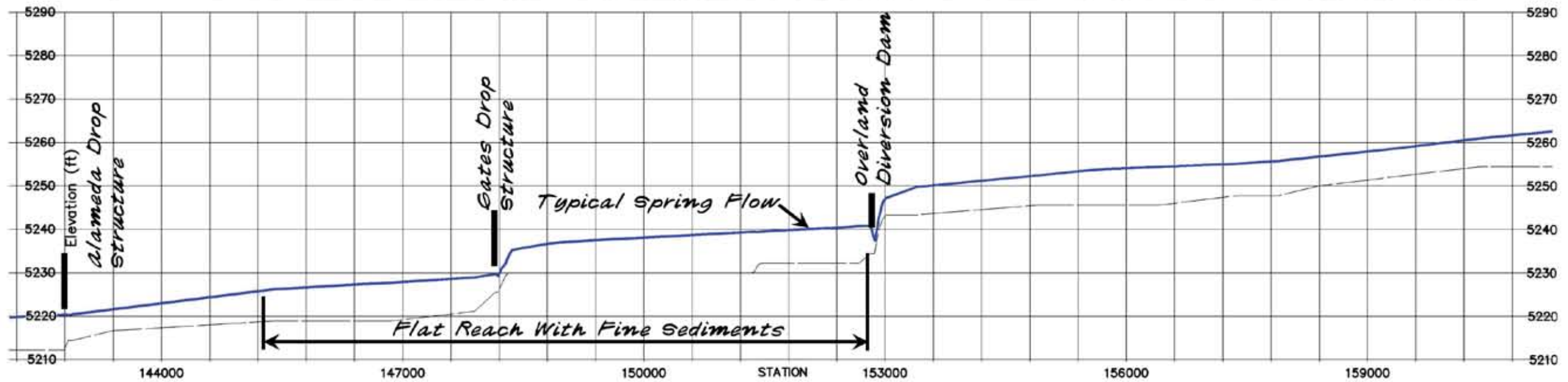
EXISTING 3RD AVENUE CHUTE



No Waves to Attract Boaters or Spectators

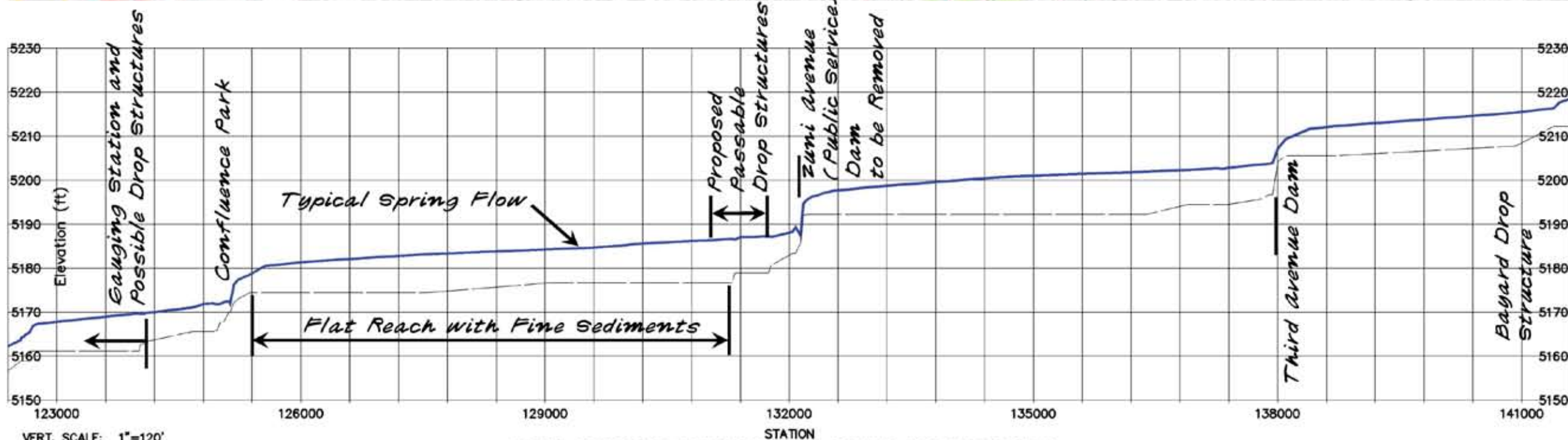


EXISTING WEST ALAMEDA DROP STRUCTURE



VERT. SCALE: 1"=120'
HOR. SCALE: 1"=1200'

RISO ILLUSTRATIVE RIVER PLAN AND PROFILE
SOUTH SECTION



RISO ILLUSTRATIVE RIVER PLAN AND PROFILE
NORTH SECTION

